



A23S

**TECHNICAL SPECIFICATION
FOR
ALKALINE MANGANESE DIOXIDE ALARM BATTERY**

DATE: 9/9/2005

SPEC. NO.: ES-A23S

REVISION: 2005B

GOLDEN POWER CORPORATION (HK) LTD.

Flat C, 20/F, Block 1, Tai Ping Industrial Centre, 57 Ting Kok Road, Tai Po, N.T., Hong Kong

Tel: (852) 3125 2288 Fax: (852) 3125 2000 / (852) 3125 2001

E-mail: battery@goldenpower.com Web Page: <http://www.goldenpower.com>

The Manufacturer reserves the right to modify product specification and data stated herein without prior notice

8. Safety Characteristics

Item	Condition	Period	Requirement	Acceptance Standard
Short Circuit Characteristics	At temperature 20+/-2°C	24 hours	There shall be no explosion of battery	N=9; Ac=0; Re=1

9. Marking

The following markings will be printed, stamped or impressed on the body of the battery:

- (1) Designation : A23S
- (2) Manufacturer's name or abbreviation **"Golden Power"**
- (3) Polarity Marking : "+" or "-"
- (4) Norminal Voltage : 12V

10. Caution for use

- (1) Since the battery is not manufactured for recharging, there are risks of electrolyte leakage or causing damage to the device if the battery is charged.
- (2) The battery shall be installed with its "+" and "-" polarity in correct position, otherwise may cause short-circuit.
- (3) Short-circuiting, heating, disposing of into fire and disassembling the battery are prohibited.
- (4) Battery cannot be forced discharged, which lead to excess gassing and, may result in bulging, leakage and de-crimping of cap.
- (5) New and used batteries cannot be used at the same time, when replaced batteries recommend to replace all and with the same brand type.
- (6) Exhausted batteries should be removed from compartment to prevent over-discharge, which cause leakage damage to the device.
- (7) Direct soldering is not allowed, which will damage the battery.
- (8) Battery should be kept out of the reach of children to prevent swallow, in case of accident should contact physician at once.

11. Shelf Life 1 year after delivery under proper storage conditions.

(Temperature: 20+/-2°C; Relative humidity: 65+/-20%RH)

90% of the capacity will be maintained after 12 months storage

12. Discharge Curves (Condition: Test temperature 20+/-2°C)

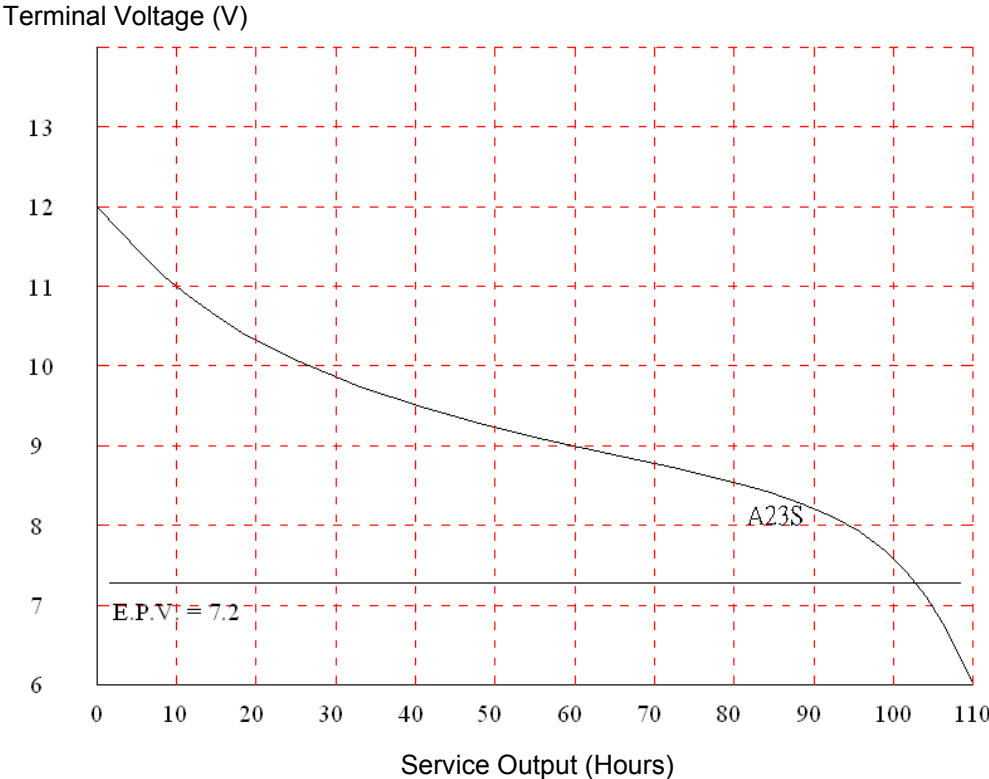
Discharge Method: 20kΩ 24 hours/day (Figure 1)

13. Battery Dimension Ref to Drawing DWG-S002

14. Battery Structure Ref to Drawing DWG-S002

GOLDEN POWER CORPORATION (HK) LTD.

Figure 1: A23S DISCHARGE CURVE

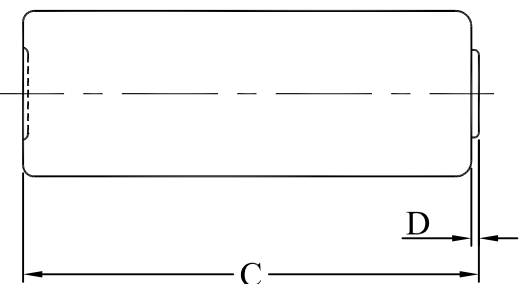
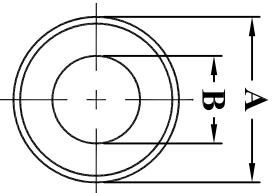


DISCHARGE METHOD: 20k ohm ; 24 hours/day

TEMPERATURE: 20+/-2°C

A23S DIMENSIONS & STRUCTURE

Dimensions (in mm) :



Dimensions	Specification
A	$\varnothing 10.15^{+0.00}_{-0.25}$
B	$\varnothing 5.50$
C	$28.30^{+0.00}_{-0.60}$
D	$0.80^{+0.3}_{-0.0}$

Structure :

